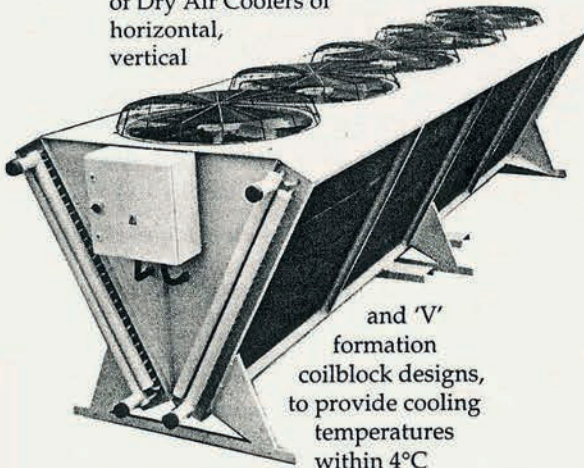


Drymec

DRY AIR COOLERS

We offer a comprehensive range of Dry Air Coolers of horizontal, vertical



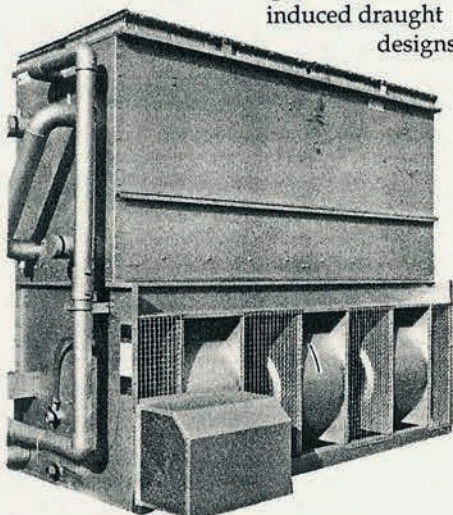
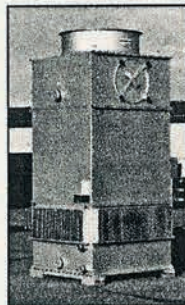
and 'V' formation coilblock designs, to provide cooling temperatures within 4°C

above the maximum dry bulb ambient temperature. The standard coilblock design would be copper tubing and aluminium finning, with the options of all copper, or stainless steel construction.

EVAPORATIVE COOLERS

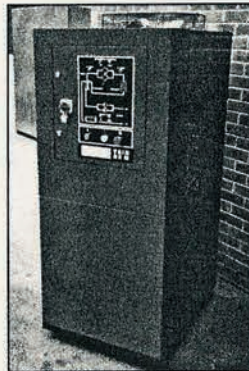
Cooling temperatures lower than those achievable from a Dry Air Cooler necessitate the use of an Evaporative Cooler.

This type of cooler will provide cooling temperatures within 4°C above the maximum wet bulb ambient. We offer both Open and Closed Circuit Evaporative Coolers with the option of forced or induced draught designs.



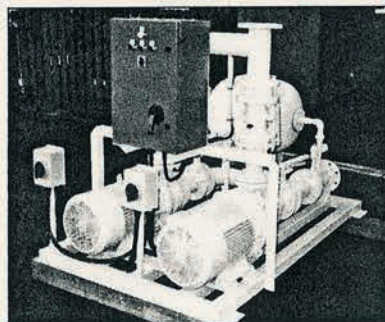
WATER CHILLERS

For cooling temperatures below wet and dry bulb ambient conditions, a refrigerant type Water Chiller is required. Our range of Water Chillers comprise the following three design types: Packaged Water Chillers, Air Cooled Water Chillers and Water Cooled Water Chillers.



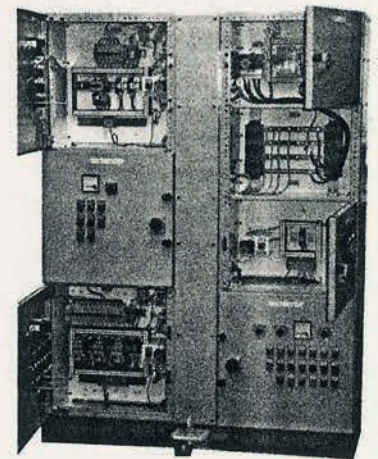
PUMPING STATIONS

Our range of Pumping Stations encompass two basic designs, Open Circuit and Closed Circuit, with the latter design including an air elimination package and expansion tank. Pumping Stations can be supplied with a single pump, or



dual pumps with the option of automatic pump changeover. The construction can be of a ferrous or non-ferrous design together with the facility to provide deionisation plant for pure water cooling systems.

CONTROL PANELS



A very important component of an Industrial Cooling Water System is the Control Panel. We offer a wide range of control systems, from a solid state single enclosure Starter Panel, to an electronic PLC controlled cubicalised Motor Control Centre.

PRESSURISATION UNITS

Closed Circuit Pressurised Systems require a permanently connected make-up water source.

Where site conditions cannot accommodate the conventional Header Tank we offer our range of Pressurisation Units, which are designed to cater for individual system volumes and static head conditions.



DRYMEC Ltd.
Unit 4R Bramhall Moor Technology Park
Pepper Road
Hazel Grove
Stockport SK7 5BW

Tel 0161 487 4747
Fax 0161 487 3778
www.drymec.com
sales@drymec.com